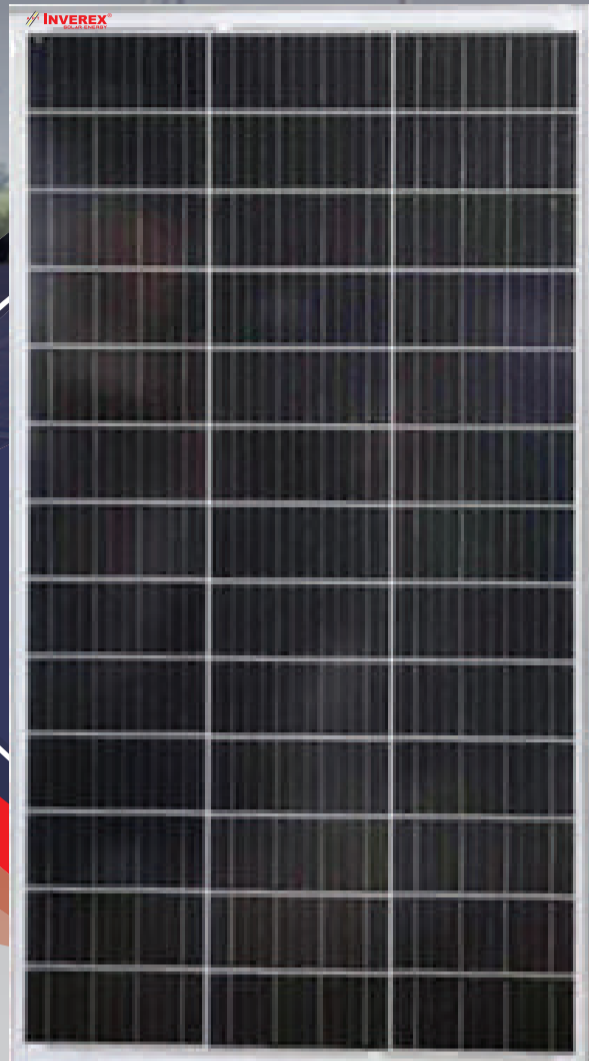




INVEREX[®]
SOLAR ENERGY

**10
YEARS**
PRODUCT
WARRANTY

**25
YEARS**
WARRANTY ON
POWER OUTPUT
Terms &
Condition Apply



180-WATT

MONO PERC SOLAR PANEL

PRODUCT FEATURES

- Industry leading module power output warranty
- International quality, safety and performance certifications
- Manufacturing facility certified to ISO9001 quality management system standards
- Beautiful appearance, good durability & easy installation
- Special design in accordance with requirements of customers



UAN: +92-21-111-209-988



www.aptinverex.com



info@aptinverex.com

180-WATT MONO PERC SOLAR PANEL

SPECIFICATIONS * STC: irradiance 1000 W/m², AM 1.5, G and cell temperature of 25°C

Peak Power(Pmax)	180
Max power voltage(Vmp)	22.7
Max power current(Imp)	7.93
Open circuit voltage(Voc)	26.55
Short circuit current(Isc)	8.35
Cell efficiency(%)	21.59
Module Efficiency(%)	18.15

NOCT : irradiance 800W/m², AM 1.5G, ambient temperature. 20 °C , wind speed 1 m/s

SPECIFICATIONS * STC: irradiance 1000 W/m², AM 1.5, G and cell temperature of 25°C

Peak Power(Pmax)	134
Maximum Power Voltage(Vmp)	18.2
Maximum Power Current(Imp)	7.37
Open Circuit Voltage(Voc)	22.3
Short Circuit Current(Isc)	8.07

ELECTRICAL DATA (NOCT)

Maximum System Voltage (V)	1000/1500
Maximum Series Fuse Rating (A)	15
Power Tolerance	0 ~ +3%
Pmax Temperature Coefficients (w/°C)	-0.400%
Voc Temperature Coefficients (v/°C)	-0.290%
Isc Temperature Coefficient (A/°C)	+0.048
NOCT Nominal Operating Cell Temperature (°C)	47±2
Operating and Storage Temperature(°C)	-40 ~ +85

MECHANICAL DATA

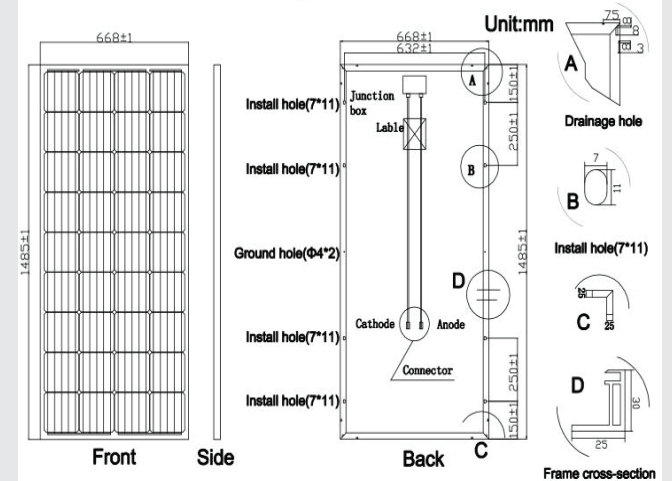
Cell Type	210x105 Mono
Number of Cells	39(3x13)
Dimensions	1485x668x30
Weight	11.0kg
Front glass	3.2mm high transmission, low iron, tempered glass
Frame	Anodized Aluminium Alloy
Junction Box	IP65/IP67
Output Cables	4mm ² cable 90cm+mc4
MaxWind Load/Snow Load	2400Pa/5400Pa

PACKING CONFIGURATION

Container	20' GP	40' HQ
Pallets per container	07	15
Pieces per container	616	1620

DIMENSIONS AND STRUCTURE

180W Mono solar panel (1485*668*30)



IV CURVE

